



Magswitch Technology, Inc.
 1355 Horizon Ave.
 Lafayette, CO 80026
 Magswitch.com.au
 303-468-0662

Magswitch MLAY1000x2

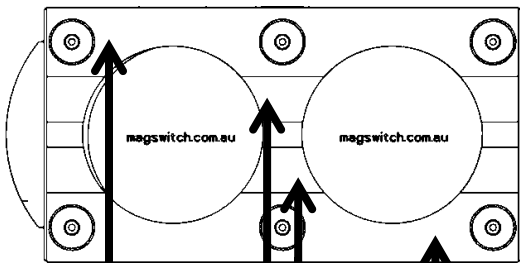
P/N: 8100484

Magswitch LAY series magnets utilize different size magnets to attain different field depths. This allows for greater working loads and increased control over larger work pieces. The MLAY1000x2 is a lightweight heavy lifting magnet ideal for lifting thick sheet, beams, pipe, and performs well on air gaps such as rust and dirt. It features a unique single swivel hook design for lifting from horizontal to vertical. With customizable pole shoes to fit almost any application, the LAY is a great all around tool that is perfect for picking pipe and round as well as large plate steel.

WARNING!
Do Not Operate Unless In
Contact With Ferrous Target



SPECIFICATIONS	
P/N: 8100484 - MAGSWITCH MLAY1000x2	
Max Breakaway*	2000 lbs/907 kg
Safe Working Load*	667 lbs/303 kg
Full Saturation Thickness	1/2" / 12.7mm
Max Safe Shear*	125.4 lbs/57 kg
Minimum Thickness for De-Stack	0.8" / 19.1mm
Net Weight	23.8 lbs/10.8 kg
Mounting Thread	M8x1.25
Overall Height	269.5 mm
Magnetic Pole Footprint	177.5x96.0 mm



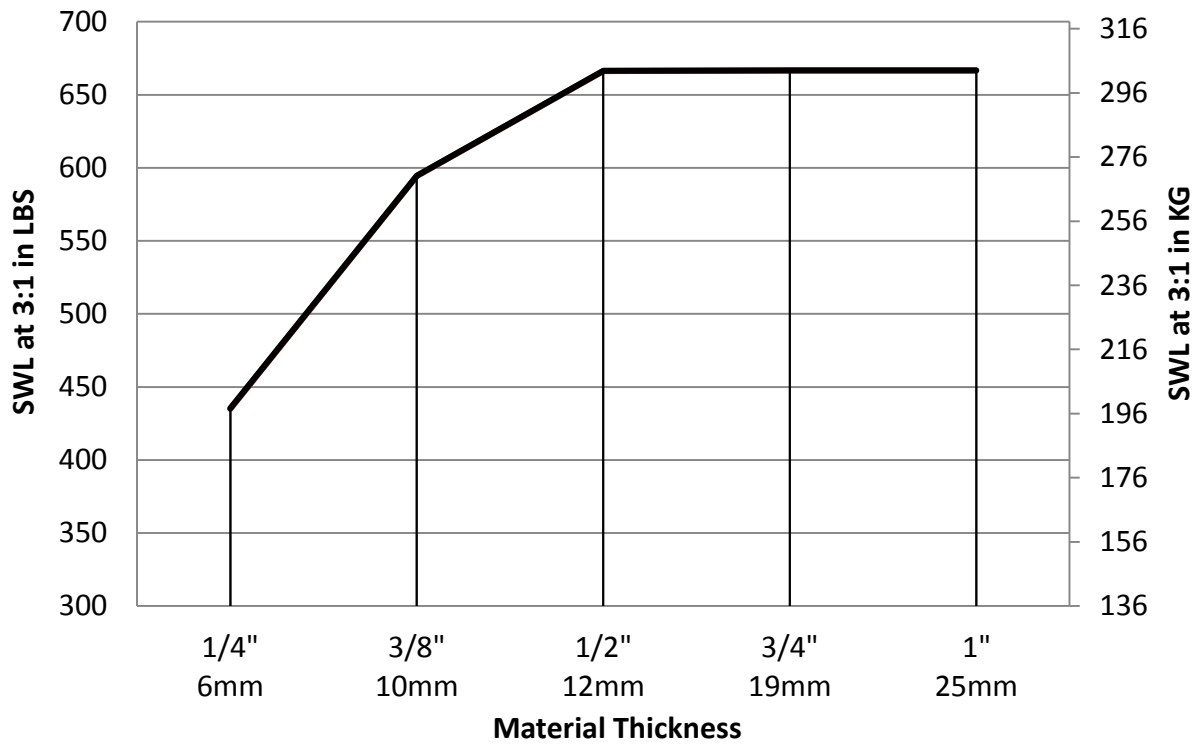
WORKING SURFACE



Part Number 110693
 Revision Date: June 25, 2012

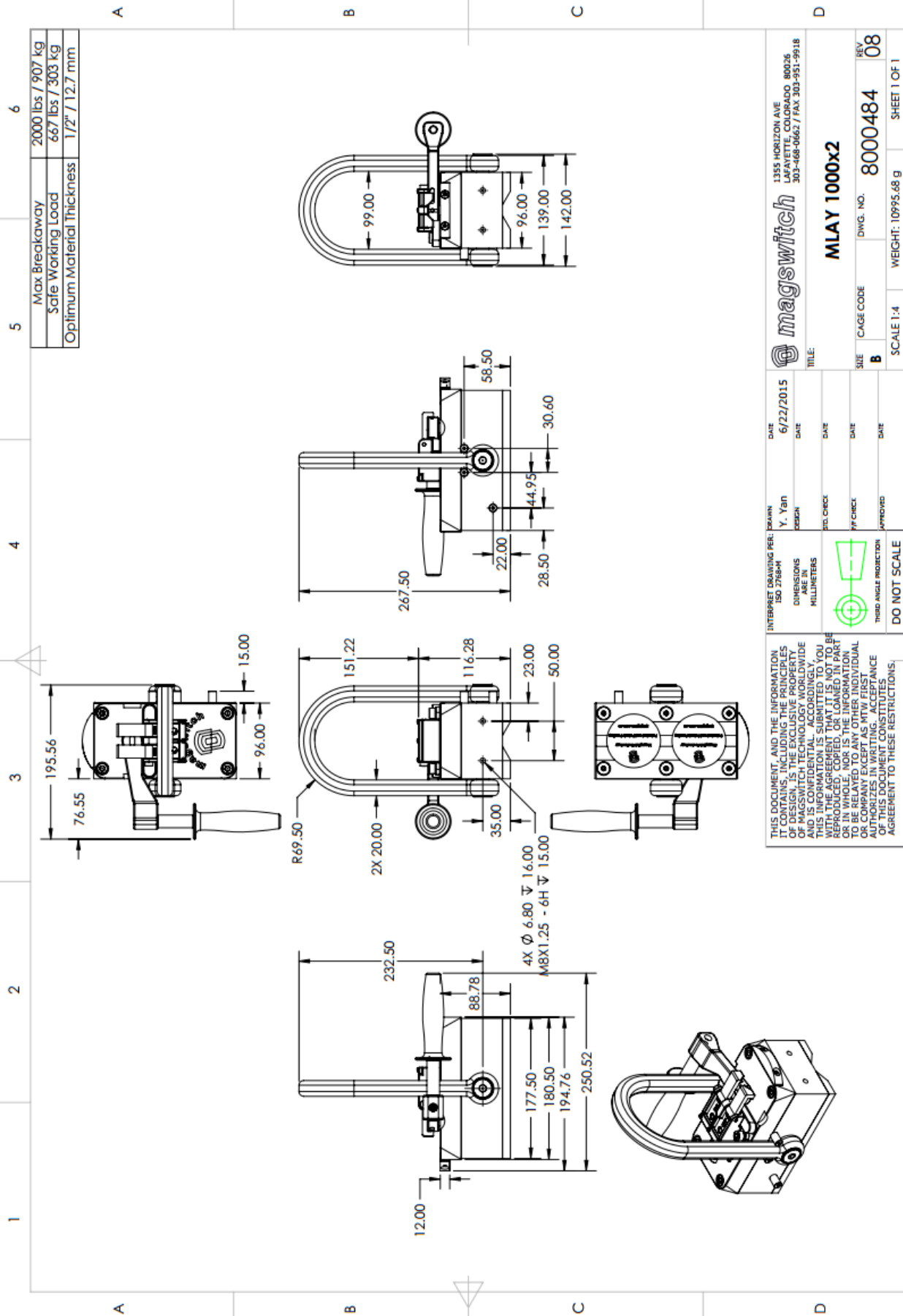
* Max Breakaway determined in laboratory environment on 2" thick SAE1018 Steel with surface roughness 63 micro inches. Many factors contribute to the actual breakaway force in each application. Always test the magswitch in each application before deployment. Refer to the magswitch information booklet for more information.

Magswitch MLAY1000x2 Safe Working Load



Part Number 110693
Revision Date: June 25, 2012

* Max Breakaway determined in laboratory environment on 2" thick SAE1018 Steel with surface roughness 63 micro inches. Many factors contribute to the actual breakaway force in each application. Always test the magswitch in each application before deployment. Refer to the magswitch information booklet for more information.



Max Breakaway	2000 lbs / 907 kg
Safe Working Load	667 lbs / 303 kg
Optimum Material Thickness	1/2" / 12.7 mm

magswitch		1355 HORIZON AVE LAFAYETTE, COLORADO 80026 303-688-0662 / FAX 303-951-9918	
TITLE: MLAY 1000x2			
SIZE	CAGE CODE	DWG. NO.	REV
B		8000484	08
SCALE 1:4		WEIGHT: 10995.48 g	

DATE	6/22/2015	DATE	
DESIGNED BY	Y. Yeh	DATE	
DRAWN BY		DATE	
CHECKED BY		DATE	
APPROVED BY		DATE	

THIS DOCUMENT AND THE INFORMATION CONTAINED HEREIN ARE THE SOLE PROPERTY OF MAGSWITCH TECHNOLOGY WORLDWIDE AND IS CONFIDENTIAL. ACCORDINGLY, THE INFORMATION CONTAINED HEREIN IS NOT TO BE REPRODUCED, COPIED, OR LOANED IN PART OR IN WHOLE, NOR IS THE INFORMATION TO BE DISCLOSED TO ANY INDIVIDUAL OR COMPANY EXCEPT AS WITH FIRST AUTHORIZATION IN WRITING. ACCEPTANCE OF THIS DOCUMENT CONSTITUTES AGREEMENT TO THESE RESTRICTIONS.

INTERPRET DRAWING PER: DRAWN	Y. Yeh	DATE	6/22/2015
ISO 2768-M		DATE	
DIMENSIONS ARE IN MILLIMETERS		DATE	
THIRD ANGLE PROJECTION		DATE	
DO NOT SCALE		DATE	



Part Number 110693
Revision Date: June 25, 2012